



**To,  
Principal/Head of School**

**Dear sir/madam,  
Greetings!**

We are thrilled to extend a warm invitation to your esteemed institution to participate in the 2nd BURGEONING Football Championship 2025, organized by Athleta in collaboration with LNIPE Gwalior. Recognized as India's premier sports university, LNIPE Gwalior offers a world-class environment for young athletes to develop their skills and gain invaluable experiences.

Event Details:

- **2nd BURGEONING Football Championship 2025**
- **Dates: March 28, 29, and 30, 2025**
- **Venue: Football Stadium, LNIPE Gwalior**
- **Organizer: Athleta**

Participation Categories:

The championship is open to Under-13 Boys. This event provides a platform for young athletes to:

- Compete with talented players from across the country.
- showcase their skills in a professionally organized event.
- Enjoy a unique and enriching experience at one of India's top sports universities.

Why Participate?

- Matches officiated by certified referees with state-of-the-art facilities.
- Recognition and awards for winners, including participation certificates for all teams.
- Opportunities to foster sportsmanship and gain valuable competitive exposure.

We firmly believe that your team's participation will elevate the championship's competitive spirit while providing your players with an unforgettable experience.

Enclosed with this letter are the detailed guidelines and registration form for the event. We kindly request you to confirm your participation by submitting the completed forms by the designated deadline.

We eagerly look forward to welcoming your team to the championship and collaborating to create an unforgettable sporting event.

Warm regards,  
Lt **Col Anil K Suri**  
**Co-ordinator Training & Competitions**  
**Athleta Games**  
**[www.athletagames.com](http://www.athletagames.com)**  
**Mobile : +91 78382 78398**



## About Athleta:

Athleta, with its vision of "Sports for All," has made a humble beginning from a small group business to a multi-sport company catering across India. We are committed to maintaining international quality standards and adhering to timely schedules throughout the year.

Quality and customer satisfaction continue to remain our prime pursuit. At Athleta, we believe that "we don't sell products and expertise; we sell satisfaction." Our policy fosters the growth of sports and emphasizes the development of talent by promoting it at the grassroots level and nurturing it further.

## Why Us?

Athleta aims to identify and nurture talent from the grassroots level, providing opportunities for participation in international sports leagues and training programs. We take immense pride in preparing students to represent India at the international level. Alongside national and international championship participation, Athleta offers exposure to sports conferences, workshops, and future-oriented counseling services. Our mission is to develop sports holistically while supporting athletes in their journey to excellence.

[www.athletagames.com](http://www.athletagames.com)



Age Group

**UNDER 13 ( BOYS )**

**Age Cut Off - 1/1/2013**

Duration of Match

**20-5-20**

Format of the Match

**8 Aside**

Format of the Tournament

**League-cum-knockout**

Max no. of players in a team

**14 players**

Registration fee

The registration fee for individual entry is 10,000 INR, which includes the tournament registration fee, pick and drop service to and from Gwalior Airport and Railway Station, all healthy meals, and accommodation in the LNPE Sports Excellence Hostel.

## Payment Details

Account Name - Athleta Games India PVT. LTD.

Account Number - 6629843581

IFSE CODE - IDIB000K181

Bank Name - Indian bank (Kirti nagar Branch)

## Proof of Age and Control

Age verification will take place at the tournament venue an hour before the first match and before each subsequent game to confirm identity and age.

## PLAYER REGISTRATION AND SUBSTITUTION RULES

### **Player Registration:**

a) Team officials must provide each player's passport, ID, or Adhaar, along with a headshot photo.

b) Changes to the registration list can be made before the team's first match kick-off.

## PLAYER REGISTRATION AND SUBSTITUTION RULES

### **Team Composition:**

- a) Each team can register and use a maximum of fourteen (14) players.
- b) The format allows for six (6) substitutes.

### **Substitution Rules:**

- a) Substitutions will follow a rotation rule, and substituted players may re-enter the match.
- b) Players must enter or leave the field from the technical area or at the center line.
- c) The substituted player must leave the field before the new player enters.
- d) Incorrect substitutions will be penalized with a yellow card

## INITIAL STAGES AND POINT SYSTEM

In the initial stage of the tournament, teams will be grouped, with the Organizers responsible for assigning teams to each group. The progression to the knock-out stage will depend on the final standings within these groups. These standings will be determined based on a points system, where teams earn 3 points for a win, 1 point for a draw, and 0 points for a loss.

Any team that fails to appear at the designated time and location for a match may be declared the loser with a score of 0-3. If the team misses a second match, they will be disqualified and excluded from the remainder of the tournament.

In cases where two or more teams finish with the same number of points, the ranking will be decided using the following criteria:

1. Goal difference
  2. Total goals scored
  3. Head-to-head results between the tied teams
  4. Penalty shoot-out according to FIFA rules
- All group winners and runners-up will advance to the knock-out stage of the tournament



# ACCOMMODATION

Experience spacious, modern rooms that feel like a home away from home, while enjoying easy access to the city's best attractions. Whether you're here to compete or relax.

## AMENITIES



LNIPE Gwalior (Lakshmi Bai National Institute of Physical Education) is widely regarded as India's premier sports university, offering a vibrant and inspiring environment for athletes and sports enthusiasts. The campus is equipped with world-class sports infrastructure,

### Can Visit

**Gwalior Fort: A historic heritage site, offering a glimpse into India's rich cultural legacy**



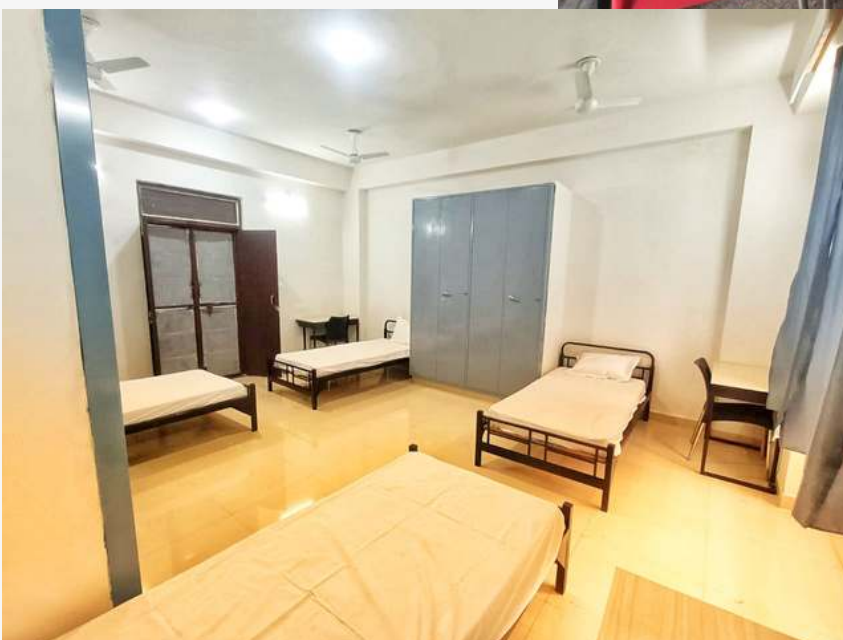
**LNIPE Football Stadium: A sprawling, well-maintained field that meets international standards, providing a perfect space for training and matches. Surrounded by lush greenery, it offers an inspiring environment for athletes to hone their skills..**





**Youth International Hostel: A spacious facility with 4 floors, hygienic toilets, and the capacity to accommodate over 400 athletes.**

**Cafeteria: A dining space capable of serving 300+ athletes at a time, ensuring healthy and delicious meals.**



**Hostel Rooms: Clean, spacious rooms with 4 beds, individual cupboards for each athlete, and dedicated lady guards for floors accommodating female athletes.**